

CAERPHILLY'S HOME FOR
STYLISH SALES
& LETTINGS

BRINSONS



MEADOW CRESCENT
CAERPHILLY



ENTRANCE HALL

LIVING/DINING ROOM

3.73 x 5.68 max (12'2" x 18'7" max)

KITCHEN

2.32 x 2.87 (7'7" x 9'4")

CONSERVATORY

2.97 x 3.07 max (9'8" x 10'0" max)

BEDROOM ONE

4.45 x 3.23 max (14'7" x 10'7" max)

BEDROOM TWO

3.56 x 2.65 (11'8" x 8'8")

SHOWER ROOM

2.41 x 1.49 (7'10" x 4'10")

GARAGE

COUNCIL TAX

Borough: Caerphilly

Band: C

TENURE

Freehold

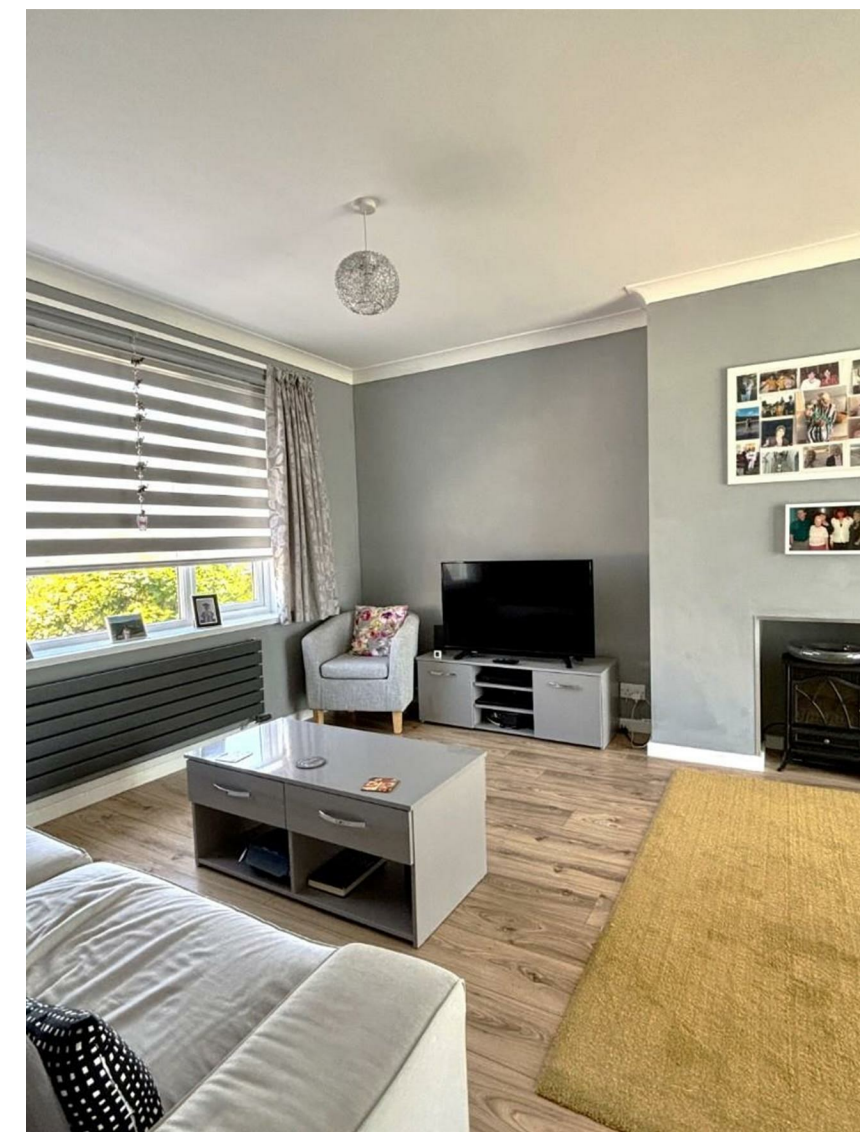
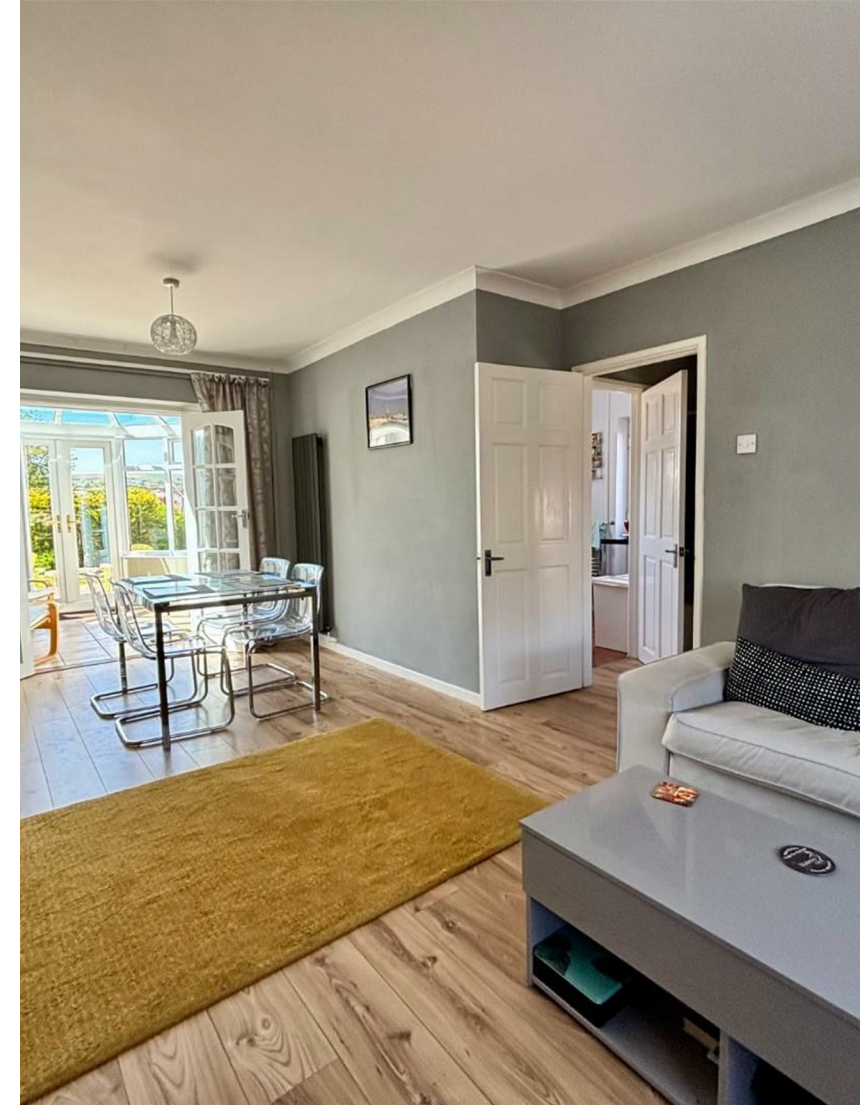
SCHOOL CATCHMENT

Welsh Medium Primary School : Y.G.G. CAERFFILI

Welsh Medium Secondary School : Y GWYNDY - YSGOL GYFUN
CWM RHYMNI

English Medium Primary School : THE TWYN SCHOOL

English Medium Secondary School : ST. MARTINS
COMPREHENSIVE SCHOOL





MEADOW CRESCENT

CAERPHILLY, CF83 1JX - £250,000

 2 Bedroom(s)  1 Bathroom(s) sq ft

Nestled in the desirable Meadow Crescent, this charming two-bedroom house offers a perfect blend of comfort and convenience. Situated in a tranquil cul-de-sac, the property boasts a peaceful atmosphere while being just a stone's throw away from the vibrant Caerphilly town centre.

Upon entering, you will find a welcoming reception room that provides an ideal space for relaxation or entertaining guests. The two well-proportioned bedrooms are perfect for a small family or professionals seeking a comfortable living environment. The property also features a modern bathroom, ensuring all your essential needs are met.

One of the standout features of this home is the ample off-road parking, accommodating up to three vehicles, along with a garage for additional storage or vehicle protection. This is a rare find in such a sought-after location.

For those who appreciate the convenience of public transport, the property is within walking distance to the local train station, making commuting to nearby areas a breeze.

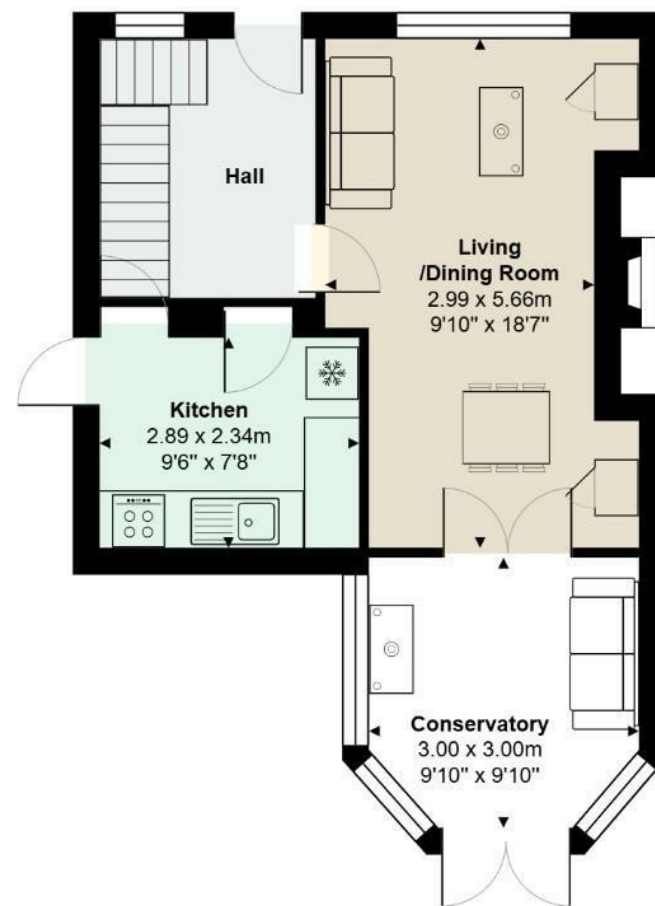
In summary, this delightful house in Meadow Crescent presents an excellent opportunity for anyone looking to settle in a friendly neighbourhood with easy access to local amenities and transport links. Don't miss the chance to make this lovely property your new home.

Freehold
EPC - C
Council Tax - C

PROPERTY SPECIALIST

Nicholas Browne
nick.browne@brinsons.co.uk
02920 867711
Property Management Co-ordinator

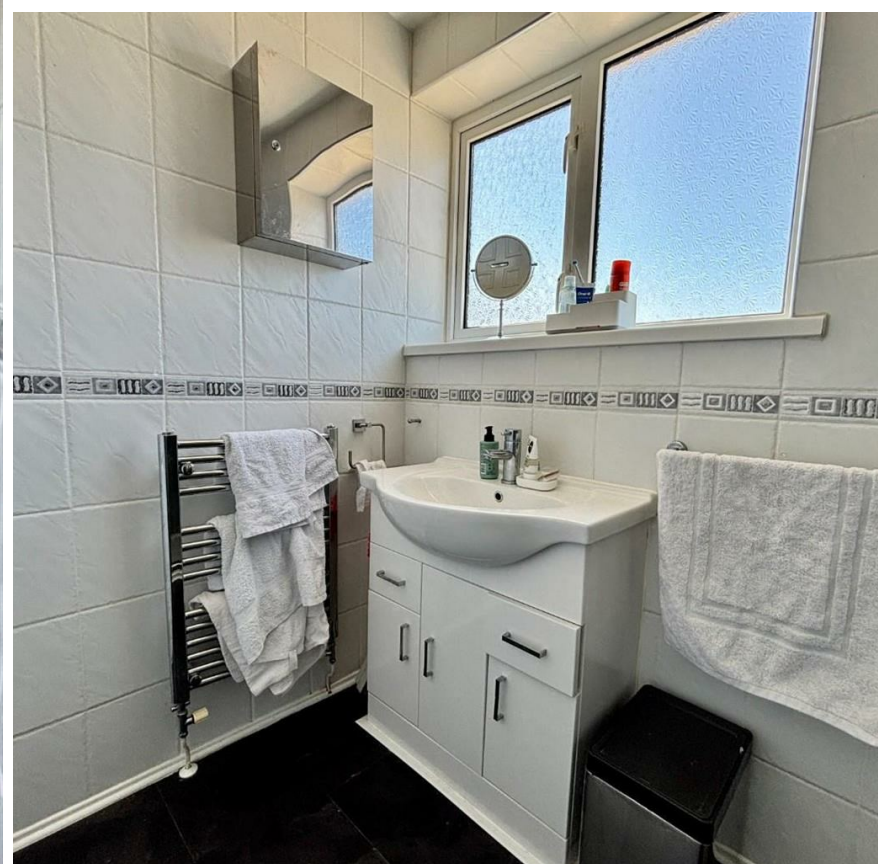
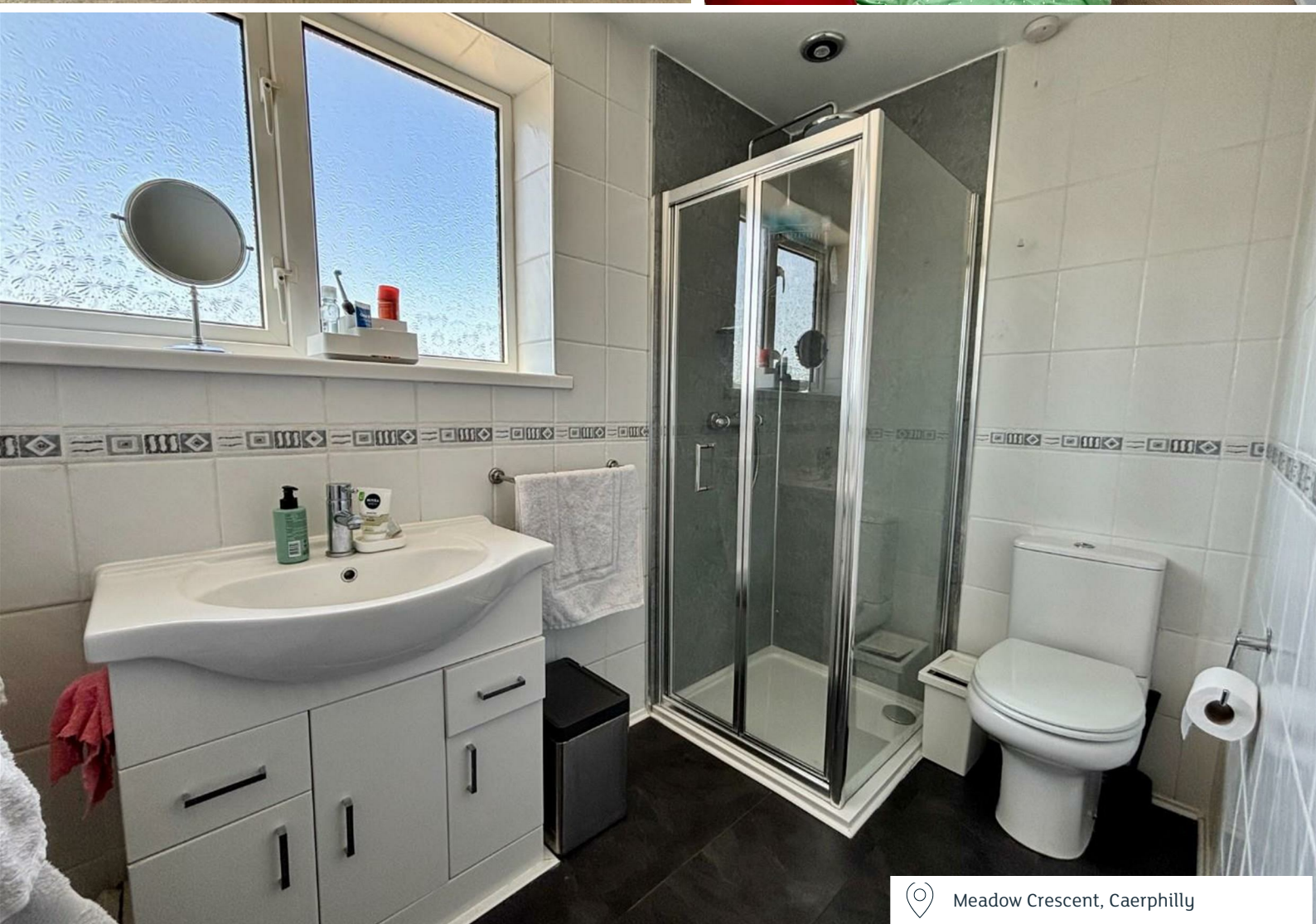




15, Meadow Crescent, Caerphilly, CF83 1JX

Total Area: 74.0 m² ... 796 ft²

All measurements are approximate and for display purposes only



Energy Efficiency Rating		
	Current	Potential
Very energy efficient - lower running costs		
(92 plus) A		
(81-91) B		87
(69-80) C	69	
(55-68) D		
(39-54) E		
(21-38) F		
(1-20) G		
Not energy efficient - higher running costs		
England & Wales	EU Directive 2002/91/EC 